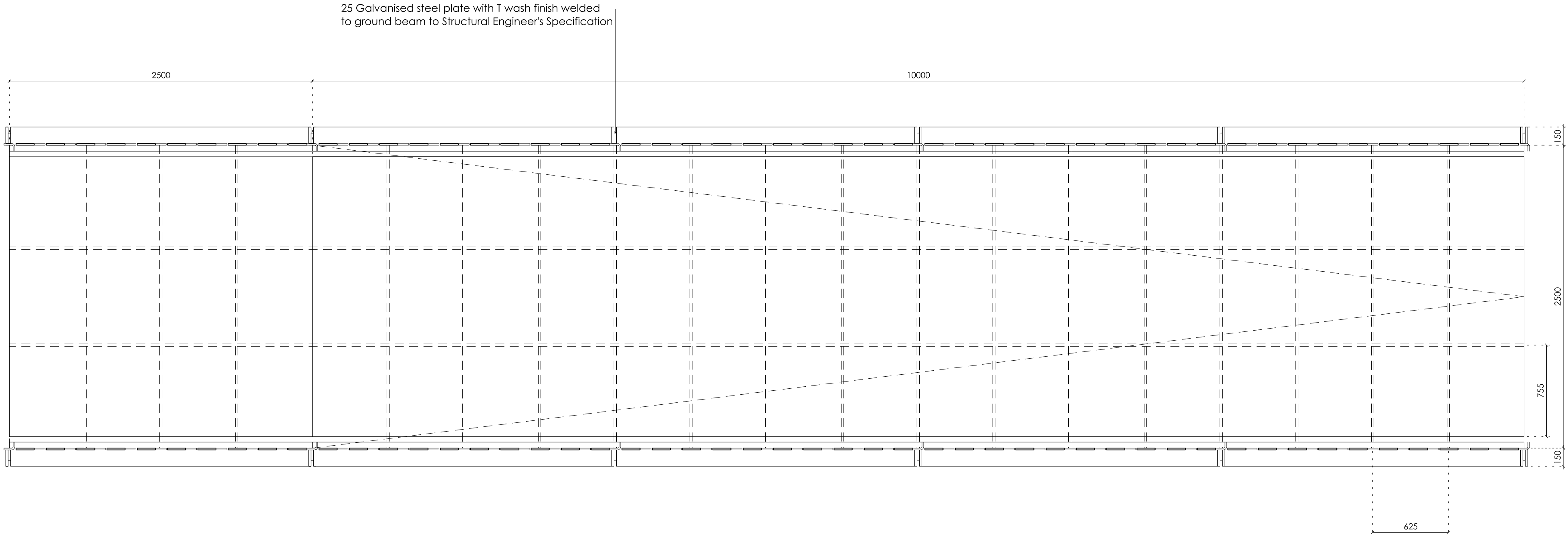


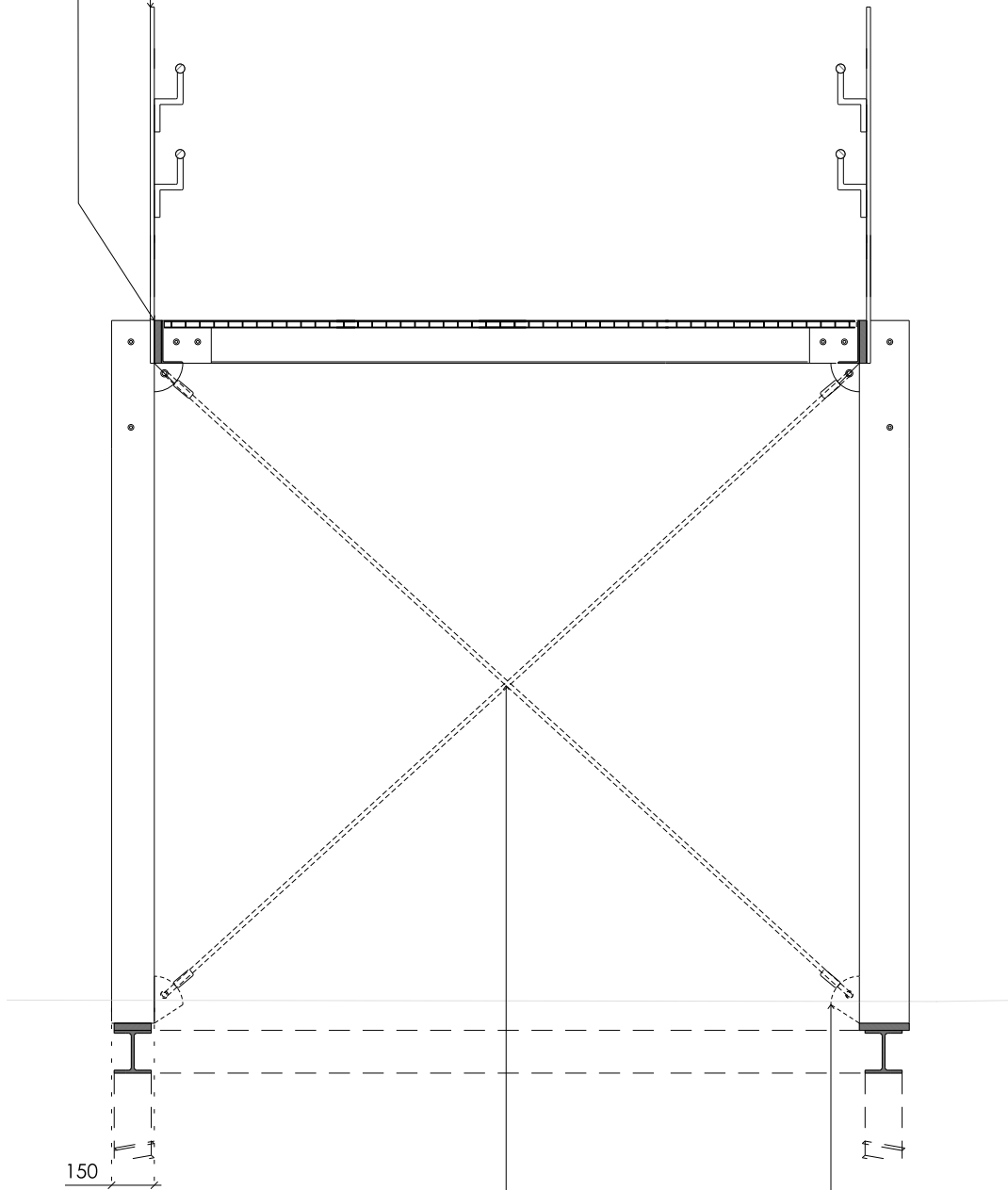
1
4152
Ramp
Elevation



3
4152
Ramp
Plan

25 Galvanised steel plate (water jet cut) with T wash finish to form baluster to Structural Engineer's Specification

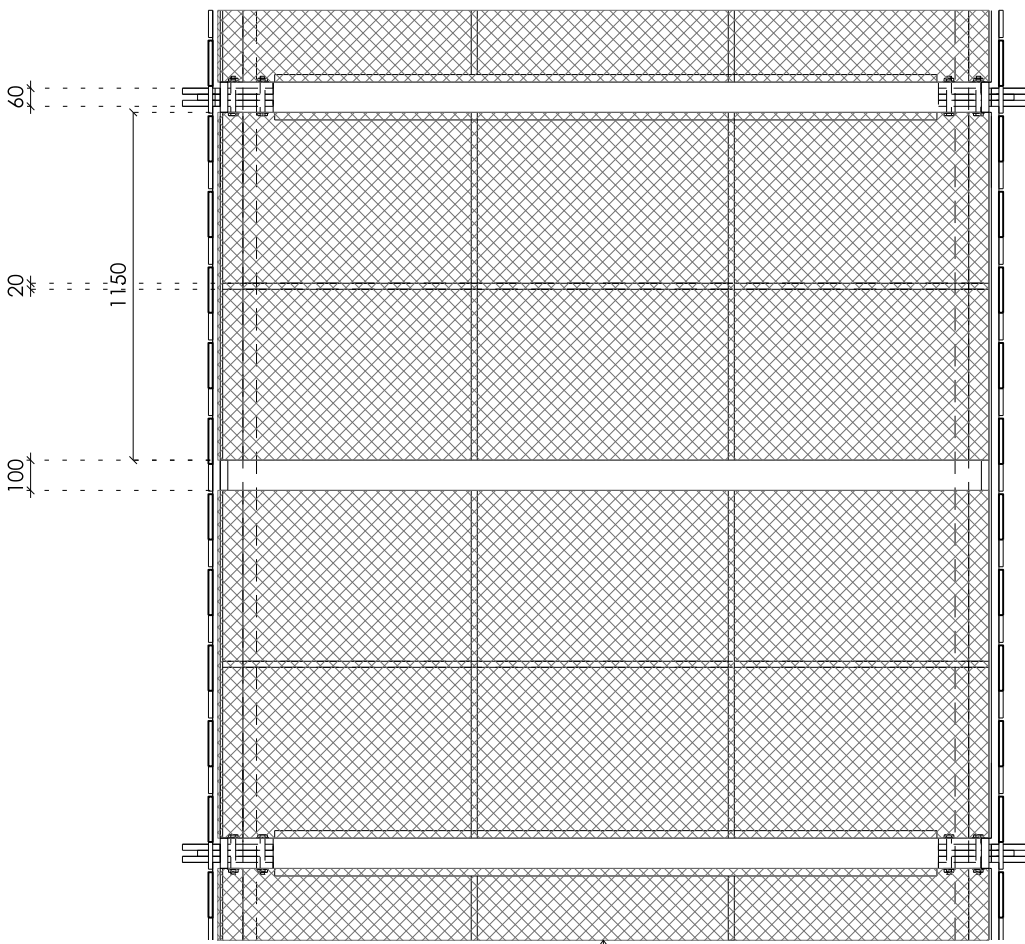
25 Galvanised steel plate with T wash finish welded to post to Structural Engineer's Specification



16 Bracing with turnbuckle to Structural Engineer's Specification

2
4152
Section
Elevation

25 Galvanised steel bracket welded to post with T wash finish to Structural Engineer's Specification



4
4152
Landing
Plan

L30.5 Carbon steel grille with shot peened finish

Tender DRAFT

Existing Fabric

General Notes:

All demolition and proposed works are to be undertaken in adherence to SMC conditions and Listed Building Consent conditions.

Jamie Fobert — Architects

Rochelle, 22 Club Row
London E2 7EY
T: +44 (0) 207 553 6560
mail@jamiefobertarchitects.com

Copyright of Jamie Fobert Architects Ltd 2023

Unless indicated below, this drawing is for information only.
Do not scale. Use figured dimensions only. All dimensions to be checked on site.

Issue/Revision	Date	Rev	Subject	Scale
Stage 4	18 07 25	A	Ramp Component	1:25
Tender Draft	24 10 25	B	Original Size	A1
			Date	17 04 25
			Drawing No.	TOL_JFA_01_XX_DW_A_4152

Project The Tower of London

Subject Ramp Component

Scale 1:25

Original Size A1

Date 17 04 25

Drawing No. TOL_JFA_01_XX_DW_A_4152